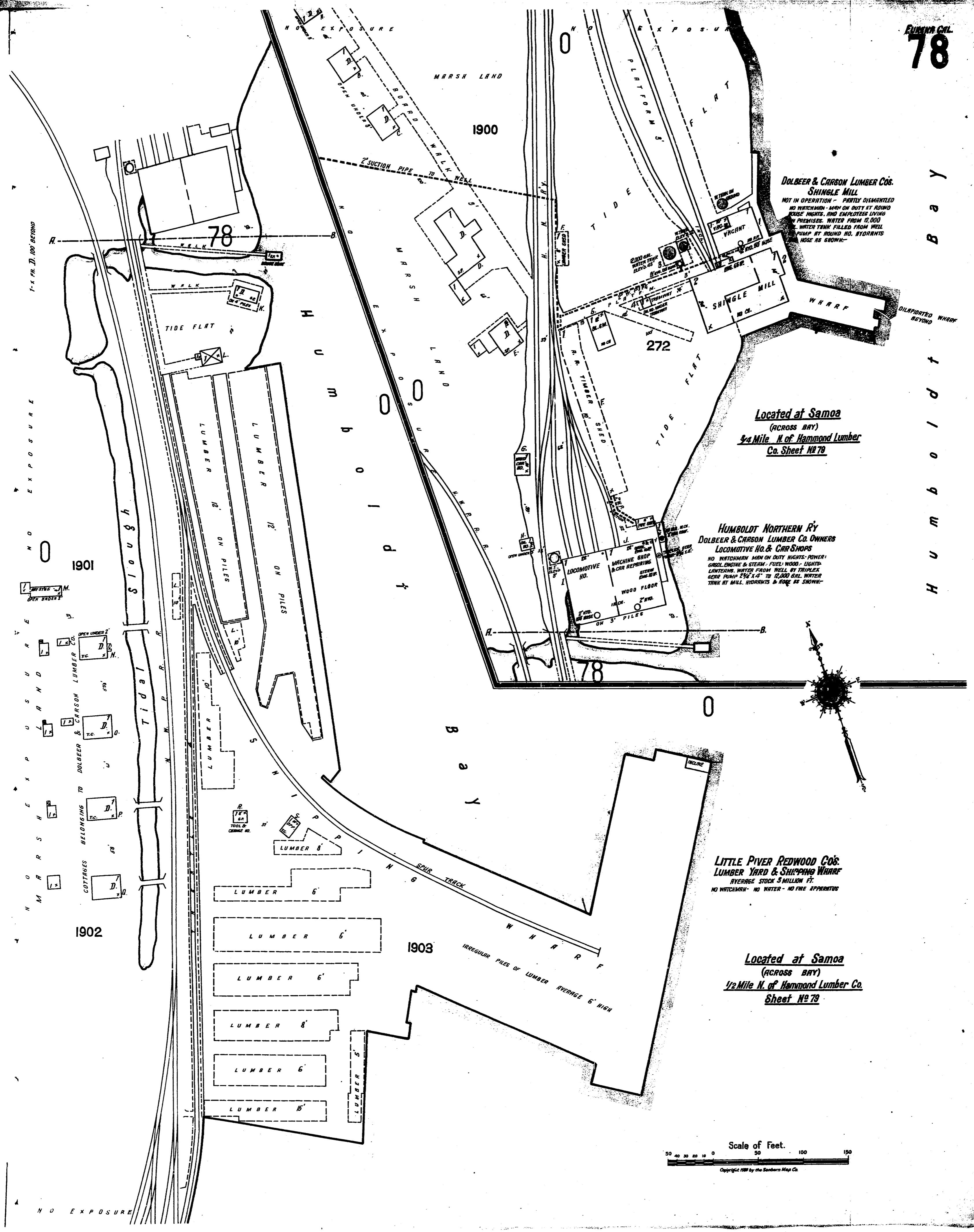


H u m b o l d t B a y



DOLBEER & CARSON LUMBER CO'S. SHINGLE MILL
NOT IN OPERATION - PARTLY DISMANTLED
NO WATCHMAN - MAN ON DUTY NIGHTS - POWER
HOUSE LIGHTS, AND EMPLOYEES LIVING
ON PREMISES. WATER FROM 12,000
L. WATER TANK FILLED FROM WELL
PUMP AT ROUND NO. HYDRANTS
HOSE AS SHOWN-

Located at Samoa
(ACROSS BAY)
1/2 Mile N. of Hammond Lumber
Co. Sheet No 79

HUMBOLDT NORTHERN RY
DOLBEER & CARSON LUMBER CO. OWNERS
LOCOMOTIVE HO. & CAR SHOPS
NO WATCHMAN - MAN ON DUTY NIGHTS - POWER
GASOLINE & STEAM - FUEL - WOOD - LIGHTS
LANTERNS. WATER FROM WELL BY TRIPLEX
SCREW PUMP 3/4" x 1/4" TO 12,000 GALL. WATER
TANK AT MILL. HYDRANTS & HOSE AS SHOWN-

LITTLE PIVER REDWOOD CO'S.
LUMBER YARD & SHIPPING WHARF
AVERAGE STOCK 3 MILLION FT.
NO WATCHMAN - NO WATER - NO FIRE APPARATUS

Located at Samoa
(ACROSS BAY)
1/2 Mile N. of Hammond Lumber Co.
Sheet No 79

